

12 Inch 7 Bladed Pedestal Fan Black/White



IGFP012W / IGFP012B

Please read these instructions carefully before use and retain for future reference.

**Before switching on your appliance,
always check for any damage which may have been caused in transit.**

CONTENTS

Important Safety Instructions..... 3-4

Product Specification..... 5

Assembly Instructions..... 6-8

Operating Instructions..... 9

Cleaning and Maintenance 10

Trouble Shooting Guide..... 11

Fuse Replacement..... 12

Disposal Information..... 13

Igenix Warranty Terms and Conditions..... 14-15

IMPORTANT SAFETY INSTRUCTIONS

Read and follow all the instructions even if you feel you are familiar with the product and find a safe place to keep this manual for future reference.

Important: This appliance is intended for use in a domestic environment only. Any other use is not recommended by the manufacturer and may cause fire, electrical shocks or other injury to user or property. When using electrical appliances, basic safety precautions should always be followed:

- This appliance is for indoor, household use only.
- Unpack the appliance and check for any damage. Do not connect the appliance to mains if damaged. Report possible damages immediately to the place of purchase. In this case retain all packaging.
- It is dangerous to alter the specifications or modify this product in any way. Any damage to the cord may cause a short circuit, fire and/or electrical shock.
- Before plugging in the appliance, check that the voltage indicated on the rating label corresponds with the mains voltage in your home.
- Do not operate the unit with a damaged cord or plug, after it malfunctions or has been dropped or damaged in any way. Return to an authorised service facility for examination and repair.
- Ensure the appliance is installed on a flat, level, stable surface to avoid overturning.
- Ensure that the air inlets and outlets are not blocked or covered.
- Do not place the unit too close to curtains or other objects, leave a minimum clearance of 30cm on all sides.
- Make sure there are no objects near the unit which can prevent it from oscillating.
- Never insert fingers pencils or other objects into the unit if the power cord is plugged in, and especially not during operation. Warn your children against these dangers.
- This appliance can be used by children aged from 8 years and above and persons with reduced physical, sensory, or mental capabilities or lack of experience and knowledge if they have been given supervision or instruction concerning use of the appliance in a safe way and

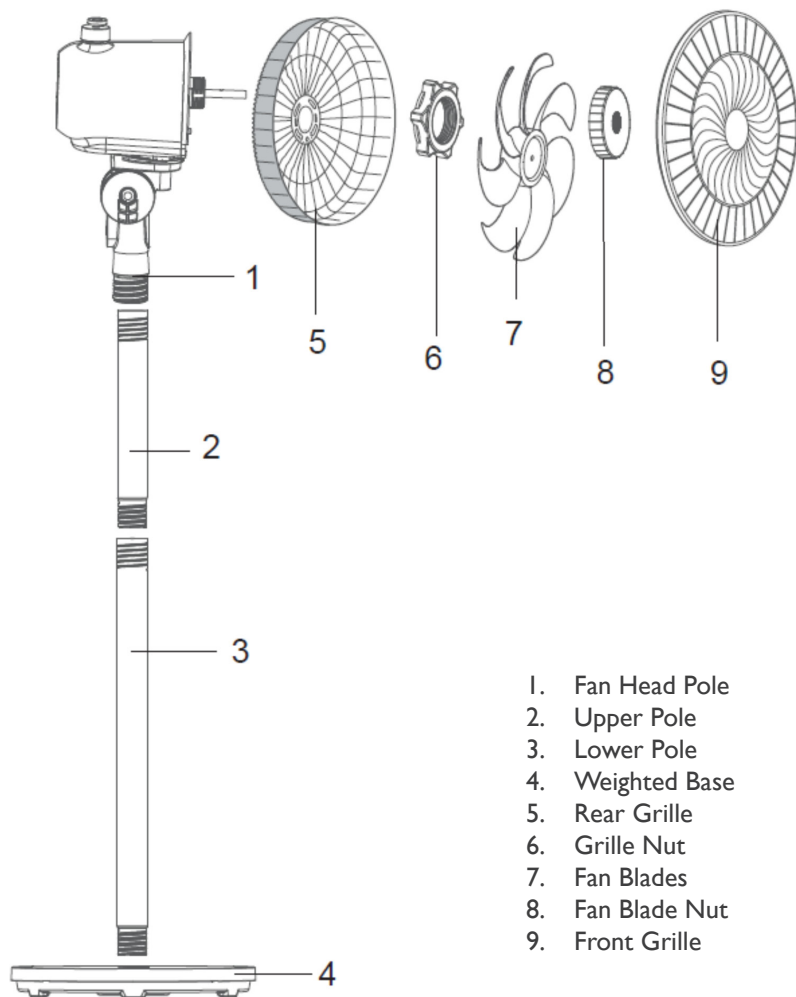
understand the hazards involved.

- Cleaning and user maintenance shall not be made by children unless they are older than 8 years and supervised.
- Keep the appliance and its cord out of the reach of children.
- Children shall not play with the appliance.
- Unplug the unit from the socket when not in use or when moving. Do not pull on the cord.
- Do not use the unit near a bath, shower, swimming pool, open window or anywhere it could be splashed with water.
- Do not expose the unit to direct sunlight.
- Do not immerse the appliance, electrical cord or plug in any type of liquid.
- Do not use the appliance near a source of heat.
- Do not use the unit near flammable or explosive gases.
- Before cleaning the unit, switch it off and unplug the power cord.
- Do not leave the unit unattended during operation. Always unplug the power cord when not in use.
- Once the fan has been assembled, do not remove the front grille.
- Clean the front grille with a slightly damp cloth. Do not remove the grille to clean the blades.
- To repair the unit, take it to a qualified service engineer. Inadequate repairs may result in a major source of danger for the user and invalidate the warranty.

PRODUCT SPECIFICATION

Brand	Igenix
Model	IGFP012W / IGFP012B
Wattage	40W
Frequency	50Hz
Voltage	220-240V~
Product Dimensions (mm)	H:1130 x W:342 x D:350
Net Weight	5kg
Oscillation	Yes
Class	II
Speeds	3

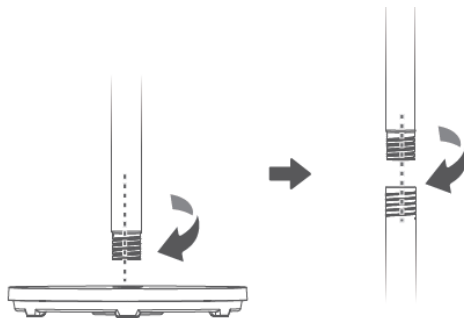
ASSEMBLY INSTRUCTIONS



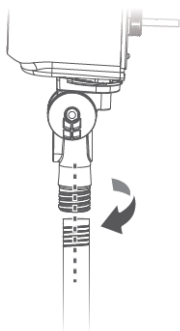
1. Fan Head Pole
2. Upper Pole
3. Lower Pole
4. Weighted Base
5. Rear Grille
6. Grille Nut
7. Fan Blades
8. Fan Blade Nut
9. Front Grille

1. To set up the fan as a pedestal fan, insert the lower pole (3) into the base (4) and turn clockwise until tight. Then insert the upper pole (2) into the lower pole (3) and turn clockwise until tight.

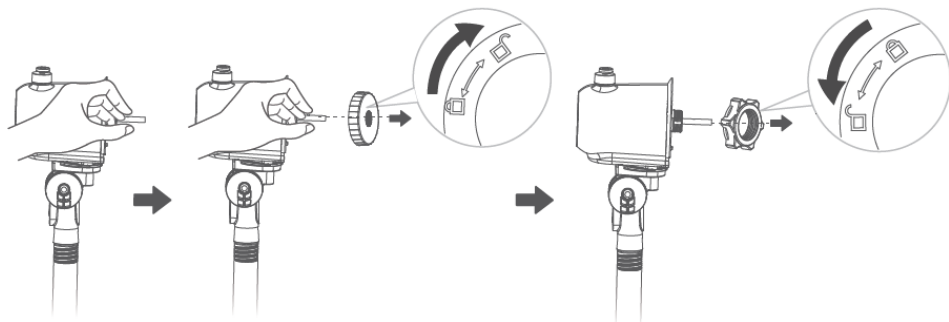
Please Note: To set up as a tabletop fan, insert the upper pole (2) directly into the base (4) and turn clockwise until tight.



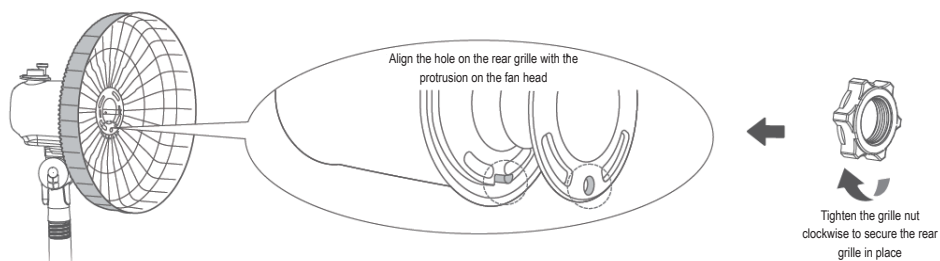
2. Insert the fan head pole into the upper pole (2) and turn clockwise until tight.



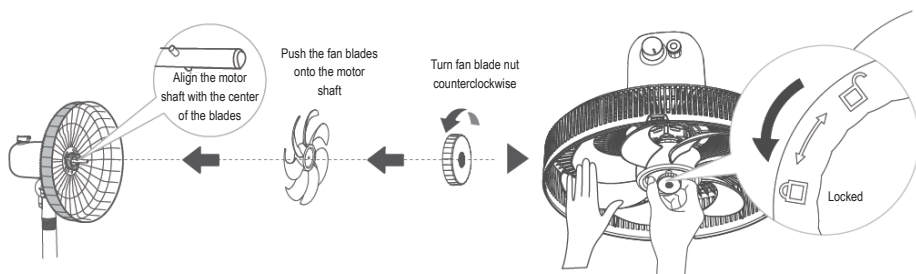
3. Remove the fan blade nut (8) from the fan head by turning clockwise. Then remove the grille nut (6) from the fan head by turning counterclockwise.



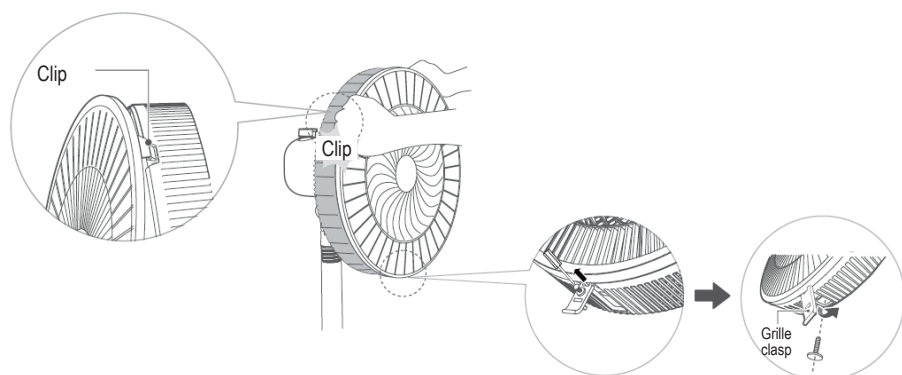
4. Install the rear grille (5) onto the fan head as shown below. Replace the grille nut (6) and turn clockwise to secure.



5. Install the fan blades (7) as shown below and then replace the fan blade nut (8) to secure.



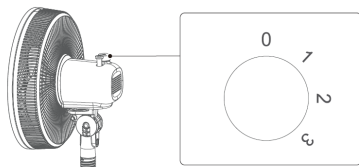
6. Align the front grille (9) and clip into the top of the rear grille (5). Loosen the screw from the clasp on the base of the front grille (9). Close the clasp over the rear grille and re-tighten the screw to secure.



OPERATING INSTRUCTIONS

On/Off and Speed Settings

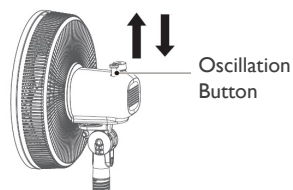
Turn the speed control dial on the fan head to turn the fan on/off and change the speed.



- 0. Off
- 1. Low
- 2. Medium
- 3. High

Oscillation Adjustment

To start oscillation, press the oscillation button down. Pull the button up to stop oscillation.



Angle Adjustment

To change the angle of the air flow, gently tilt the fan head up or down slightly.

CLEANING AND MAINTENANCE

Turn off the fan and remove the plug from the power supply before cleaning.

- Use a dry, soft cloth to remove any dust from the fan.
- If the fan is particularly dirty, use a soft damp cloth and then dry thoroughly with a soft cloth.
- Do not use any harsh or abrasive chemicals or detergents as these will damage the fan.
- Do not allow water to get inside the body of the fan.
- It is recommended to cover the fan with a plastic bag before storage to prevent dust collecting on the fan blades.
- Store the fan in a dry, ventilated area.

WARNING: Any repairs should be made by a qualified service engineer.

TROUBLE SHOOTING GUIDE

If you experience difficulties with the appliance, please check the suggestions below before contacting customer services on 01473 271 272:

Problem	Possible Cause	Possible Solution
The appliance does not work.	The appliance is not properly plugged into the wall socket.	Plug the appliance in firmly.
	The appliance is not switched on.	Make sure the appliance is switched on.
	There is no electricity running through the mains wall socket.	Check the fuse or breaker.
The fan is too noisy.	The fan is sitting unevenly.	Ensure the fan is sitting on a flat stable surface.
	The fan is not assembled correctly.	Make sure all the components are assembled together correctly.

MAINS PLUG FUSE REPLACEMENT

Fuse Replacement (Class II)

Remove the fuse cover with a small flat head screw driver. Take out the fuse and replace with a new fuse of the same Amp. Replace the fuse cover and push back into place.



DISPOSAL INFORMATION

The European Directive 2012/19/EU on Waste Electrical and Electronic Equipment (WEEE), requires that old household electrical appliances must not be disposed of in normal unsorted municipal waste.

Old appliances must be collected separately in order to optimise the recovery and recycling of the materials they contain and reduce the impact on human health and the environment.

The crossed out “wheeled bin” symbol on the product reminds you of your obligation, that when you dispose of the appliance it must be separately collected. Consumers should contact their local authority or retailer for information concerning the correct disposal of their old appliance.



Igenix Warranty Terms & Conditions

This product is guaranteed for a period of 12 months as standard from the date of purchase against mechanical and electrical defects. You can extend your warranty for a further 12 months by registering your product.

Upon registration we will cover your product for a period of 24 months from the original purchase date against any mechanical or electrical defects.

To qualify for the warranty, the product must be used for domestic household use only and in accordance with the instructions in the user manual. Any misuse of the product will result in the warranty being void.

The warranty does not cover accidental damage, misuse, neglect, tampering or incorrect adjustment or installation.

The warranty will be rendered invalid if the product is resold, has had its serial number removed (or has an invalid serial number), or if an unauthorised person has carried out any repairs or alterations.

The warranty does not cover accessories or consumable parts that require replacement under normal use. This includes shelving, dials, filters, belts and trays etc.

In the unlikely event of a breakdown please refer to the Troubleshooting guide in your user manual and check all plugs, fuses and the electricity supply.

If you still require assistance please contact our Customer Service department on **01473 271 272** or write to us at the following address:

Customer Service Department
38 Bluestem Road, Ransomes Europark
Ipswich, IP3 9RR

Please quote the Product Code which begins 'IG' or 'DF' and the PO Number on the rating label, and give details of the exact fault. We will then decide whether to repair or replace the item.

Before we arrange the repair or replacement you will be required to return a copy of your proof of purchase. Please retain your original.

If an item is replaced within the agreed warranty period, the warranty for the replacement item will be calculated from the purchase date of the original.

In the event that the product is inspected and no fault is found or the product is not within the warranty period you will be charged for the repair and any carriage costs.



Thank you for choosing Igenix

As a valued customer we would like to offer you a FREE 2 year warranty to cover your product against any electrical or mechanical defects.

This means that in the unlikely event you develop a fault or problem with your product we will happily repair or replace the item free of charge.

To qualify for the 2 year warranty you must register your product within 30 days of purchase. The full Terms & Conditions of our warranty policy are shown on the opposite page. They are also available on our website. **www.igenix.co.uk**



UK: 38 Bluestem Road, Ransomes Europark, Ipswich, IP3 9RR

EU: Castle Electrical Factors Ltd., Dundalk, A91 KA9R, IR

Tel. 01473 271 272

Disclaimer: Igenix operate a policy of continual improvement and development.
We therefore reserve the right to change/alter the specification and appearance of our appliances without prior notice.
All diagrams and images shown in this manual are for illustration purposes only.