

48cm Under Counter Fridge with 3* Ice Box



IG348R

Please read these instructions carefully before use and retain for future reference

Before switching on you appliance

Always check for any damage which may have been caused in transit

CONTENTS

Important Safety Instructions.....	2-3
Specification	4
Appliance Overview	5
Installation.....	5-7
Operating Instructions.....	8-9
Cleaning and Maintenance	10-11
Trouble Shooting Guide.....	12
Fuse Replacement.....	13
Disposal Information.....	13
Terms and Conditions and Warranty Information.....	14-15

IMPORTANT SAFETY INSTRUCTIONS

Read and follow all of the instructions even if you feel you are familiar with the product, and find a place to keep this manual handy for future reference.

Important: This product is intended for domestic use only, for food refrigeration storage only.

When using electrical appliances, basic safety precautions should always be followed:

- Do not operate the appliance with a damaged cord or plug, after it malfunctions or has been dropped or damaged in any way. All electrical repairs must be carried out by a qualified electrician. Inadequate repairs may result in a major source of danger for the user and invalidate the warranty.
- The operating voltage of the appliance is 220-240V at 50Hz. Check the voltage of the appliance matches the household voltage on the rating label and specification for further details.
- Use of an extension cord is not recommended with this product.
- This appliance can be used by children aged from 8 years and above if they have been given supervision or instruction concerning the use of the appliance in a safe way and understand the hazards involved.
- Cleaning and user maintenance shall not be made by children
- Keep the appliance and its cord out of reach of children.

- Children shall not play with the appliance.
- Children aged from 3 to 8 years are allowed to load and unload this appliance.
- This appliance can be used by persons with reduced physical, sensory or mental capabilities or lack of experience and knowledge if they have been given supervision or instruction concerning use of the appliance in a safe way and understand the hazards involved.
- Always unplug the appliance before attempting to move. When disconnecting from the electricity supply, pull the plug and not the cord.
- This product is for indoor use only.
- Do not store explosive substances such as aerosol cans with a flammable propellant in this appliance.
- Always keep the ventilation openings clear of obstruction. Should they become blocked, clear them straight away.
- The refrigerant of this product is R600a which is flammable. Ensure when moving the appliance or during installation that the cooling system does not get damaged.



WARNING: The appliance is heavy and care is needed when unpacking and moving it. Get extra help and only hold the appliance by the casing – never hold by the door or the trim.



WARNING: Risk of child entrapment. Before disposal of the old appliance, make sure that any locking mechanisms have been broken off, doors have been removed but shelves have been left in so that children cannot easily climb inside. Also remove the plug so the appliance is unusable.



WARNING: When positioning the appliance, ensure the supply cord is not trapped or damaged.



WARNING: Do not locate multiple portable socket-outlets or portable power suppliers at the rear of the appliance.

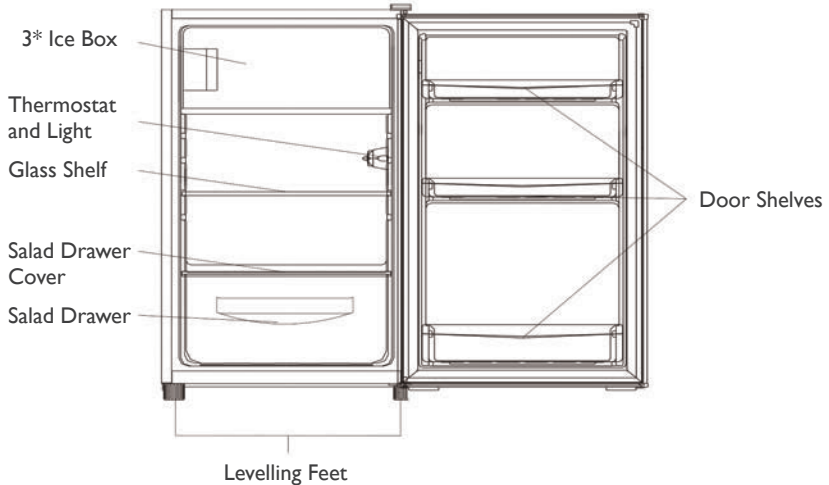
SPECIFICATION

Supplier Name / Trade Mark	Igenix
Model Number	IG348R
Category Type	Refrigerator with 3* Ice Box
Energy Efficiency Class	A+
EU Eco-Label Award	N/A
Annual Energy Consumption	157kwh/annual
Freezing Capacity	N/A
Fridge Storage Volume (Litre) and Applicable Star Rating Compartment	69L
Freezer Storage Volume (Litre)	11L
Applicable Star Rating Compartment	3-Star Ice Box
Refrigeration System (Frost Free, Static, Totally No Frost)	Static
Temperature Rise Time	14.5h
Climate Class	N,ST
This appliance is intended to be used at an ambient temperature between “16” (lowest temperature) °C and “38”(highest temperature) °C	
Noise Emission (dB)	41dB
Built-in Appliance	No
Wine Storage Appliance	No
Voltage (V)	220-240V
Wattage Power (W)	80W
Frequency (Hz)	50Hz
Power Source	AC

Ambient Room Temperature Limits

Climate Class	Symbol	Ambient Temperature °C
Extended Temperate	SN	+ 10 to + 32
Temperate	N	+ 16 to + 32
Subtropical	ST	+ 16 to + 38
Tropical	T	+ 16 to + 43

APPLIANCE OVERVIEW



INSTALLATION

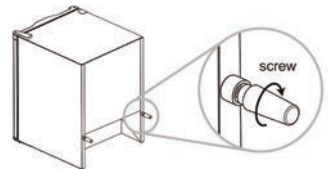
Location and Air Circulation

- The appliance must stand vertically on a flat, even surface, to level the appliance use the levelling feet by turning them until the appliance is as level as possible.
- This appliance has been designed to operate in ambient temperatures between 16°C and 38°C. It is not recommended to place this appliance in a room where the temperature is likely to drop below 10°C.
- The appliance should not be placed near to sources of heat e.g. cookers, radiators, direct sunlight or in any unheated rooms e.g. garages, or outhouses, as extreme temperatures will affect the performance of your appliance.
- Do not expose the appliance to damp conditions, open air or rain.
- Do not lift the appliance by the pipes or the door when moving.

Never place the appliance in a wall recess, fitted cabinet or furniture as this will not allow adequate ventilation and cause a potential fire hazard. Allow 50mm of space at the sides of the appliance and 100mm above the appliance. Never push the appliance against the wall, leave at least a 15mm gap. Providing you follow the recommended ventilation requirements you will:

- Increase the life of the appliance.
- Minimise the risk of condensation on the outside of the appliance.
- Minimise operating noises caused by vibration.

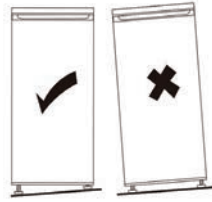
Note: The appliance is supplied with rear spacers; these are to be screwed to the rear of the appliance to ensure enough ventilation at the rear of the appliance.



Levelling the unit

To level the appliance you will need to adjust the levelling feet found at the front of the appliance.

If the appliance is not level the doors and magnetic seal will not align properly.



Reverse the door

The appliance door can be fitted to open to either the left or the right depending on its location. The appliance will have to be tilted and supported in order to carry this out. It is advisable to get some help during this procedure.

Important: Do not lay the appliance flat as this may damage the coolant system. Take care when fitting and tightening screws.

To change the direction of the door, please follow these instructions:

1. Ensure the appliance is unplugged and empty.

2. Remove the top right hinge cover.

3. Undo screws and remove hinge.

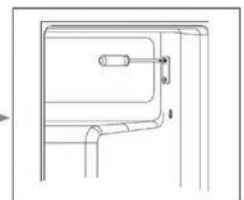
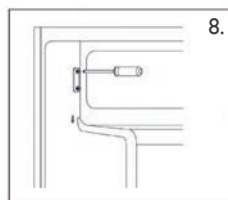
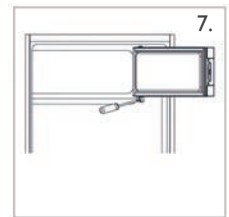
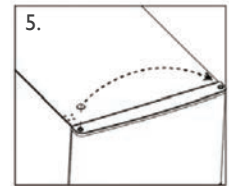
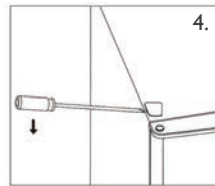
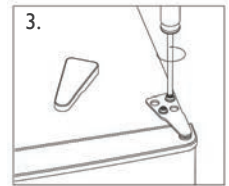
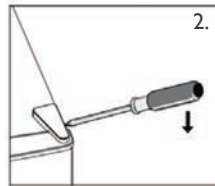
4. Remove the top left screw cover.

5. Move the hinge pivot cover from the left side to the right.

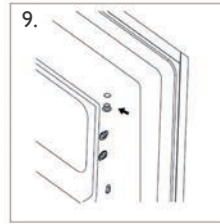
6. Remove the door by lifting upwards off of the hinge and place on a padded surface to prevent damage.

7. Unscrew the bottom hinge on the freezer door and remove and place on a padded surface to prevent damage.

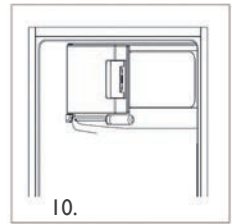
8. Remove door holder and replace on the opposite side.



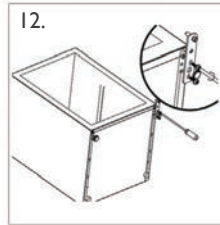
9. Move the hinge cover from the left side to the right.



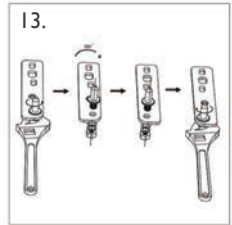
10. Rotate the ice box door and place the hinge side on the opposite side and then fix the door holder.



11. With help, gently tilt the appliance backwards to allow access to the bottom bracket.

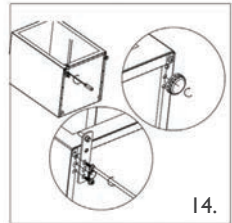


12. Remove the levelling feet then unscrew and remove the bottom hinge pin.



13. Remove the bracket and turn over and replace.

14. Refit the hinge bracket onto the bottom hinge pin and refit the levelling feet.

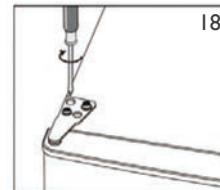


15. The appliance can now be placed upright.

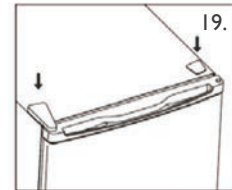
16. Replace the door back on the hinge pin.

17. With the door closed, check that the door is aligned horizontally and vertically and that the seals are closed on all sides.

18. Insert the top hinge bracket and screws to the top of the appliance. Use a spanner to tighten if necessary.



19. Replace the hinge and hinge pivot cover.



Note: Check that the door is aligned horizontally and vertically and that the seals are closed on all sides before tightening the bottom hinge.

Re-adjust the levelling feet to minimise operation noises caused by vibration.

OPERATING INSTRUCTIONS

Before using your Appliance

- This appliance must be left to stand in an upright position for at least 4 hours before being switched on the first time to allow the coolant gases time to settle after the appliance is in place.
- Before placing food in the appliance turn on and wait 24 hours, this is to make sure it is working correctly and also to allow for the optimal internal temperature to be reached.
- The interior of the appliance needs to be cleaned prior to use by wiping with a soft cloth and using warm water. Wipe the appliance completely dry before replacing any shelves or salad drawers.
- Once dry, plug the appliance into the mains socket.
- Avoid opening the door for long periods or unnecessarily.
- To maintain adequate air circulation, do not over fill the appliance.
- Allow hot or warm foods to cool to room temperature before storing in the appliance.
- Keep the food packed, wrapped or covered.
- For hygiene reasons, always wrap food using a suitable packaging material, before storing in your appliance to avoid contact with the surface of the appliance.

To avoid contamination of food, please respect the following instructions:

- Opening the door for long periods can cause a significant increase of the temperature in the compartments of the appliance.
- Clean regularly surfaces that can come in contact with food and accessible drainage systems.
- Clean water tanks if they have not been used for 48h; flush the water system connected to a water supply if water has not been drawn for 5 days.
- Store raw meat and fish in suitable containers in the refrigerator, so that it is not in contact with or drip onto other food.
- Two-star frozen-food compartments (if they are presented in the appliance) are suitable for storing pre-frozen food, storing or making ice-cream and making ice cubes.
- One-, two- and three -star compartments (if they are presented in the appliance) are not suitable for the freezing of fresh food.
- If the appliance is left empty for long periods, switch off, defrost, clean, dry and leave the door open to prevent mould developing within the appliance.

Refrigerator compartments	Type of food
Door or balconies of fridge compartment	<ul style="list-style-type: none"> • Foods with natural preservatives, such as jams, juices, drinks, condiments. • Do not store perishable foods.
Crisper drawer (salad drawer)	<ul style="list-style-type: none"> • Fruits, herbs and vegetables should be placed separately in the crisper bin. • Do not store bananas, onions, potatoes, garlic in the refrigerator.
<ul style="list-style-type: none"> • Fridge shelf – bottom • Chiller (box/drawer) 	<ul style="list-style-type: none"> • Raw meat, poultry, fish (for short-term storage)
Fridge shelf – middle	<ul style="list-style-type: none"> • Dairy products, eggs
Fridge shelf – top	<ul style="list-style-type: none"> • Foods that do not need cooking, such as ready-to-eat foods, deli meats, leftovers.
Freezer drawer(s)/shelf	<ul style="list-style-type: none"> • Foods for long-term storage. • Bottom drawer/shelf for raw meat, poultry, fish. • Middle drawer/shelf for frozen vegetables, chips. • Top drawer/shelf for ice cream, frozen fruit, frozen baked goods.

Adjusting the Temperature

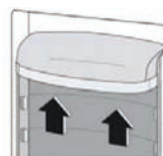
- The ideal internal temperature of your appliance should be between 0°C to 5°C. This is regulated by the temperature control located internally at the top of the appliance.
- There are 8 Settings on the temperature control, with Setting 7 being the coldest, setting 1 being the warmest and setting 0 being off.
- Adjust the temperature control which is located inside the appliance to Setting 4, this is the correct setting to use in a room with an average ambient temperature of 20°C.
- Avoid setting the thermostat too high, as this may reduce the temperature to a point where some food begins to freeze. If this happens turn down the thermostat slightly.
- The temperature in the appliance compartment can be monitored by using a fridge freezer thermometer. **DO NOT USE** a Mercury filled thermometer, as a breakage would cause a health hazard.

Shelves

- The appliance is equipped with a series of runners so that the shelves can be positioned as desired.

Door Shelves

- To help with storage the door shelves can be placed at different heights.
- To adjust pull the door shelf upwards until it comes free, it can then be refitted in the desired position.



CLEANING AND MAINTENANCE

Switch off the electrical supply and remove the plug from the mains socket before cleaning.

Interior

1. Remove all food from the appliance and cover to help keep cool.
2. Remove all the shelves and salad crisper carefully from the appliance and wash in warm clean water with a soft cloth and dry thoroughly. Never replace the shelves or salad crisper into the appliance if wet.
3. Wipe the interior of the appliance with a damp clean cloth.
4. Dry the interior thoroughly with a clean cloth and replace the shelves.
5. Plug in and switch on and allow the temperature in the appliance to drop back to an adequate temperature.
6. Replace the food in the appliance.

Note: Avoid getting water into the electric components of the appliance i.e. the thermostat) as this may damage your appliance.

Defrosting the Ice Box

After a period of time frost will build up in the Ice Box. Regular defrosting will therefore be necessary to maintain the efficiency of the appliance.

Defrosting should be carried out if the frost build-up begins to interfere with the food storage. The best time to defrost your ice box is when the amount of food stored is low.

To defrost the ice box, please follow the steps below:

1. Take out the frozen food and store in a spare freezer or wrap well and store in a cool dry place.
2. Unplug the appliance from the mains supply, making sure not to pull the cord. Leave the door open, to speed up the defrosting process, bowls of warm water can be placed inside the appliance to raise the temperature.
3. Remove the ice with a plastic ice scraper. DO NOT use pointed or sharp edged objects such as knives, forks or screw drivers to remove the ice.
4. When all traces of ice have been removed and defrosting is completed, clean away any water and wipe your appliance dry.
5. Clean your appliance as described, plug in and switch back on, Setting 4 on your temperature control.
6. Allow at least 4 hours for the temperature to return to the adequate temperature before putting the food back into the appliance.

Important: Do not use any mechanical devices or other means to accelerate the defrosting process other than those recommended by the manufacturer.

Exterior

- Use a clean, damp soft cloth to wipe the exterior surface of the appliance and dry thoroughly.
- Use a vacuum cleaner to remove dust from underneath the appliance and from around the compressor which is situated at the back of the appliance, regularly to maintain adequate ventilation.

Use caution not to damage the coolant system.

Important: Do not use abrasive cloths, powders, household cleaners, bleach or wax polish to clean the appliance as these can leave a smell in the appliance and can damage the exterior.

Door Seal

Use a clean, damp soft cloth to wipe the door seal and in between the creases, avoid damaging the door seal as this will affect the performance of your appliance.

Drainage Channel

- The drainage channel must be cleaned regularly to prevent a build-up of impurities; this can be found on the interior back wall of your appliance.
- Use a damp clean cloth and wipe the channel clean, then use a pipe cleaner or similar flexible object to clean the drainage hole to prevent blockages.

Going away

If you are going away and do not want to leave the appliance left on, switch off at the socket and remove the plug from the mains sockets ensuring not to pull the cord. Remove any food and follow the cleaning instructions in the “Cleaning and Maintenance” section.

Important: Leave the door ajar as this will prevent odours and mould accumulating in the appliance and will allow the appliance to dry completely.

Power Cut

In the event of a power cut keep the appliance door closed to maintain the temperature inside.

Operating Sounds

The cooling gas which circulates in the cooling circuit may make a slight noise (bubbling sound) even when the compressor is not running. Do not worry this is quite normal.

If these sounds are different check that:

- The appliance is well levelled
- Nothing is touching the rear.
- There is not anything on the appliance that may be vibrating

Bulb Replacement

- Turn the thermostat control to Setting 0 to switch off.
- Disconnect the appliance from the mains supply.
- Remove the screw on the bulb cover.
- Pull the lamp cover off.
- Unscrew the bulb and replace with a new bulb of the correct size and type.
- Refit the bulb cover and replace the screw.
- Plug in the appliance to the mains and turn the thermostat control to right position.

TROUBLESHOOTING GUIDE

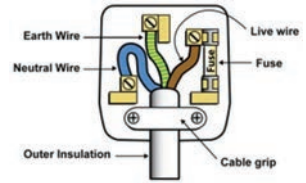
If you are having problems with your appliance, please use our troubleshooting guide below. If you are unable to resolve the issue using this guide please ring our Customer Service Department on 01473 271 272. Please have the model code, batch number and purchase information available.

Fault	Possible Cause	Solution
The fridge does not work.	Mains plug is not plugged in or is loose.	Insert mains plug.
	Temperature control dial is set at number "0"	Set the dial to another setting to switch the appliance on.
	Fuse has blown or is defective.	Check fuse, replace if necessary.
	Socket is defective.	Mains malfunctions are to be corrected by an electrician.
	Temperature is not properly adjusted.	Please look in the initial "Temperature Setting" section.
The food is too warm	Temperature is not properly adjusted.	Please look in the initial Temperature setting section.
	Door was open for an extended period.	Open the door only as long as necessary.
	A large quantity of warm food was placed in the appliance within the last 24 hours.	Turn the temperature dial to a colder setting temporarily.
	The appliance is near a heat source.	Please see installation location section.
Appliance cools too much.	Temperature is set too cold	Adjust the temperature dial to a warmer setting temporarily.
Unusual noises.	The appliance is not level.	Move appliance slightly to level.
	A component, e.g. a pipe, on the rear of the appliance is touching another part of the appliance or the wall.	Move the appliance slightly or if necessary, carefully bend the component out of the way.
	The appliance is touching the wall or other objects.	Move the appliance slightly.
Water on the floor	Water drain hole is blocked.	See the Cleaning and Maintenance section.
Side panels are hot.	It's normal. Heat exchange parts are in the sides.	Use gloves to touch sides.

FUSE AND MAINS PLUG REPLACEMENT

Fuse Replacement (Class I)

This appliance must be earthed. There are 3 screws on the plug, remove them and open the shell. Take out fuse and replace with a new fuse of the same Amp. Install the shell again and tighten the screws.




DISPOSAL INFORMATION

The European Directive 2012/19/EU on Waste Electrical and Electronic Equipment (WEEE), requires that old household electrical appliances must not be disposed of in normal unsorted municipal waste.

Old appliances must be collected separately in order to optimise the recovery and recycling of the materials they contain and reduce the impact on human health and the environment.

The crossed out “wheeled bin” symbol on the product reminds you of your obligation, that when you dispose of the appliance it must be separately collected. Consumers should contact their local authority or retailer for information concerning the correct disposal of their old appliance.



 **WARNING:** During use, service and disposal of the appliance, please pay attention to the symbol as shown on the left side. This is located on rear of the appliance (rear panel or compressor). It is a risk of fire warning symbol. There are flammable materials in both the refrigerant pipes and compressor. Please ensure the appliance is located well away from ignition sources during use, service and disposal.

Igenix Warranty Terms & Conditions

This product is guaranteed for a period of 12 months as standard from the date of purchase against mechanical and electrical defects. You can extend your warranty for a further 12 months by registering your product.

Upon registration we will cover your product for a period of 24 months from the original purchase date against any mechanical or electrical defects.

To qualify for the guarantee, the product must be used for domestic household use only and in accordance with the instructions in the user manual. Any misuse of the product will result in the warranty being void.

The guarantee does not cover accidental damage, misuse, neglect, tampering or incorrect adjustment or installation.

The guarantee will be rendered invalid if the product is resold, has had its serial number removed (or has an invalid serial number), or if an unauthorised person has carried out any repairs or alterations.

The warranty does not cover accessories or consumable parts that require replacement under normal use. This includes shelving, dials, filters, belts and trays etc.

In the unlikely event of a breakdown please refer to the Troubleshooting guide in your user manual and check all plugs, fuses and the electricity supply.

If you still require assistance please contact our Customer Service department on **01473 271 272** or write to us at the following address:

**Customer Service Department
38 Bluestem Road, Ransomes Europark
Ipswich, IP3 9RR**

Please quote the Product Code which begins 'IG' or 'DF' and the Batch Code beginning '5' and give details of the exact fault. We will then decide whether to repair or replace the item.

Before we arrange the repair or replacement you will be required to return a copy of your proof of purchase. Please retain your original.

If an item is replaced within the agreed guarantee period, the guarantee for the replacement item will be calculated from the purchase date of the original.

In the event that the product is inspected and no fault is found or the product is not within the guarantee period you will be charged for the repair and any carriage costs.



Thank you for choosing Igenix

As a valued customer we would like to offer you a FREE 2 year warranty to cover your product against any electrical or mechanical defects.

This means that in the unlikely event you develop a fault or problem with your product we will happily repair or replace the item free of charge.

To qualify for the 2 year warranty you must register your product within 30 days of purchase. The full Terms & Conditions of our warranty policy are shown on the opposite page. They are also available on our website. **www.igenix.co.uk**

igenix

38 Bluestem Road, Ransomes Europark, Ipswich, IP3 9RR

Tel. 01473 271 272

Disclaimer: Igenix operate a policy of continual improvement and development.
We therefore reserve the right to change/alter the specification and appearance of our appliances without prior notice.
All diagrams and images shown in this manual are for illustration purposes only.