

## 55cm Under Counter Larder Fridge



# IG255X

PO Number:

**Please read these instructions carefully before use and retain for future reference.**

**Before switching on your appliance,  
always check for any damage which may have been caused in transit.**

## **CONTENTS**

Important Safety Instructions.....	3-5
Technical Specification .....	6
Appliance Overview .....	7
Installation.....	8-10
Operating Instructions.....	11-12
Cleaning and Maintenance .....	13-14
Trouble Shooting Guide.....	15
Mains Plug Fuse Replacement .....	16
Disposal Information.....	17
Igenix Warranty Terms & Conditions .....	18-19

## IMPORTANT SAFETY INSTRUCTIONS

**Important:** This appliance is not intended for use by persons including children with reduced physical, sensory or mental capabilities, or lack of experience and knowledge, unless they have been given supervision or instruction concerning use of the appliances by a person responsible for their safety.

- This product is intended to be used in a household and similar applications such as:
  - staff kitchen areas in shops, offices and other working environments;
  - farm houses and by clients in hotels, motels and other residential type environments;
  - bed and breakfast type environments;
  - catering and similar non retail applications.
- Do not use mechanical devices or other means to accelerate the defrosting process, other than those recommended by the manufacturer.
- Do not use electrical appliances inside the food storage compartments of the appliance, unless they are recommended by the manufacturer.
- Do not store explosive substances such as aerosol cans with a flammable propellant in this appliance.
- Ensure that the electricity supply in your home is rated at 220 - 240 volts before operating the appliance.
- Do not use the appliance if there is any damage to the power cord.
- Use of an extension cord is not recommended with this product.
- This product is for indoor use only.
- Keep packaging material out of the reach of children, as it can become a choking or suffocation hazard.
- Always unplug the appliance before attempting to move it.
- Children should be supervised to ensure that they do not play with the appliance.
- Ensure that the refrigerant circuit is not damaged.
- The refrigerant of this product is R600a which is flammable.
- Ensure when moving the appliance or during installation that the cooling system does not get damaged.
- DANGER: Risk of child entrapment.
  - Before you dispose of your old refrigerator or freezer, remove the doors and leave the shelves in place so that children cannot easily climb inside.
- When disposing of the appliance, remove the plug so the appliance is unusable.

**IMPORTANT:** Always allow 12 hours before turning on the refrigerator to allow the coolant gases time to settle after the refrigerator is in place.

- Before installation take care to remove all cardboard or other packaging, including material from the condenser tubes and any material surrounding the motor / compressor unit.

- The cardboard packaging is recyclable and should be disposed of according to local regulations. Keep the packaging materials out of the reach of children.



**WARNING:** Risk of fire / flammable materials.

- When positioning the appliance, ensure the supply cord is not trapped or damaged.
- Do not locate multiple portable socket-outlets or portable power supplies at the rear of the appliance.
- Children aged from 3 to 8 years are allowed to load and unload refrigerating appliances.

To avoid contamination of food, pay attention to the following:

- Opening the door for long periods can cause a significant increase of the temperature in the compartments of the appliance;
- Clean regularly surfaces that can come in contact with food and accessible drainage systems;
- Clean water tanks if they have not been used for 48 hours; flush the water system connected to a water supply if water has not been drawn for 5 days;
- Store raw meat and fish in suitable containers in the refrigerator so that it is not in contact with or cannot drip onto other food;
- Two-star frozen-food compartments are suitable for storing pre-frozen food, storing or making ice-cream and making ice cubes;
- One-, two- and three-star compartments are not suitable for the freezing of fresh food;
- If the refrigerating appliance is left empty for long periods, switch off, defrost, clean, dry and leave the door open to prevent mould developing within the appliance.

The table below contains general guidelines on the storage of food in refrigerated appliances.

Refrigerator location	Type of food
Fridge door	<ul style="list-style-type: none"> <li>• Foods with natural preservatives, such as jams, juices, drinks, condiments.</li> <li>• Do not store perishable foods.</li> </ul>
Crisper bin (salad drawer)	<ul style="list-style-type: none"> <li>• Fruits, herbs and vegetables should be placed separately in the crisper bin.</li> <li>• Do not store bananas, onions, potatoes, garlic in the refrigerator.</li> </ul>
Fridge shelf – bottom chiller bin	<ul style="list-style-type: none"> <li>• Raw meat, poultry, fish (for short-term storage).</li> </ul>
Fridge shelf – middle	<ul style="list-style-type: none"> <li>• Dairy products, eggs.</li> </ul>
Fridge shelf – top	<ul style="list-style-type: none"> <li>• Foods that do not need cooking, such as ready-to-eat foods, deli meats, leftovers.</li> </ul>
Freezer drawer/shelf	<ul style="list-style-type: none"> <li>• Foods for long-term storage.</li> <li>• Bottom drawer/shelf for raw meat, poultry, fish.</li> <li>• Middle drawer/shelf for frozen vegetables, chips.</li> <li>• Top drawer/shelf for ice cream, frozen fruit, frozen baked goods.</li> </ul>

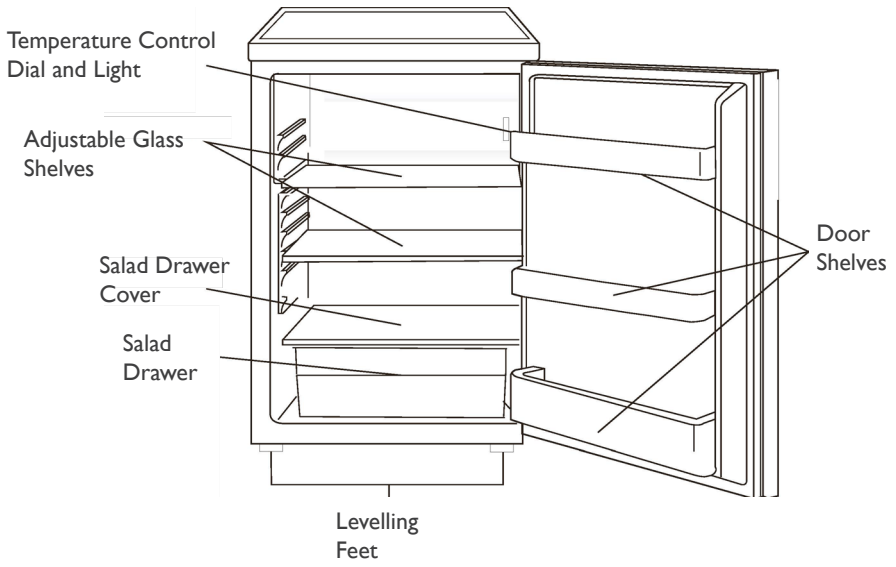
## TECHNICAL SPECIFICATION

Supplier Name / Trade Mark	Igenix
Model Number	IG255X
Category Type	Under Counter Fridge
Energy Efficiency Class (New)	E
Annual Energy Consumption	90kWh
Fridge Storage Volume (Litre)	127
Freezer Storage Volume	N/A
Applicable Star Rating Compartment	N/A
Refrigeration System	Static
Climate Class	N,ST
Noise Emissions (dB)	39
Built-In Appliance	N/A
Wine Storage Appliance	N/A
Voltage (V)	220-240
Wattage Power (W)	90
Frequency (Hz)	50
Power Source	AC

### Ambient Room Temperature Limits

Class	Symbol	Ambient average temperature °C
Extended temperature	SN	+10 to +32
Temperature	N	+16 to +32
Subtropical	ST	+16 to +38
Tropical	T	+16 to +43

# APPLIANCE OVERVIEW



# INSTALLATION

## Location and Air Circulation

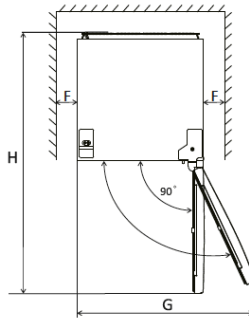
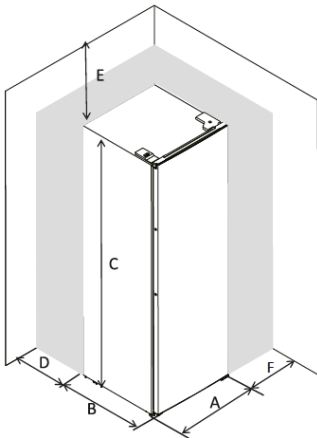
- The appliance should be installed well away from sources of heat such as radiators, boilers, direct sunlight etc.
- Ensure that air can circulate freely around the back of the cabinet.
- To ensure best performance, if the appliance is positioned below an overhanging wall unit, the minimum distance between the top of the cabinet and the wall unit must be at least 50 mm. Ideally, however, the appliance should not be positioned below overhanging wall units.
- The appliance must stand vertically on a flat, even surface, to level the appliance use the levelling feet, by turning them until the appliance is as level as possible.
- It is not recommended to install on a carpeted surface.
- The appliance is not intend to be used as built in appliance.



**WARNING:** It must be possible to disconnect the appliance from the mains power supply; the plug must therefore be easily accessible after installation.

## Location

Keep enough space for the door to fully open.



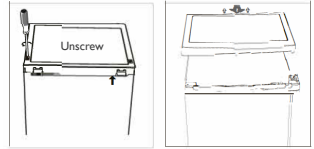
A	550
B	580
C	850
D	min=50
E	min=50
F	min=50
G	1100
H	1130

## Reversing the Door

The appliance door can be fitted to open to either the left or the right depending on its location. The appliance will have to be tilted and supported in order to carry this out. It is advisable to get some help during this procedure.

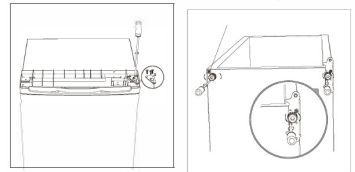
- Ensure the unit is unplugged and empty.
- To take the door off, it is necessary to tilt the unit backwards. You should rest the unit on something solid so that it will not slip during the door reversing process.
- All parts removed must be saved to do the reinstallation of the door.
- Do not lay the unit flat as this may damage the coolant system.
- It's better that 2 people handle the unit during assembly.

1. Remove the two screws at rear side of the top cover.



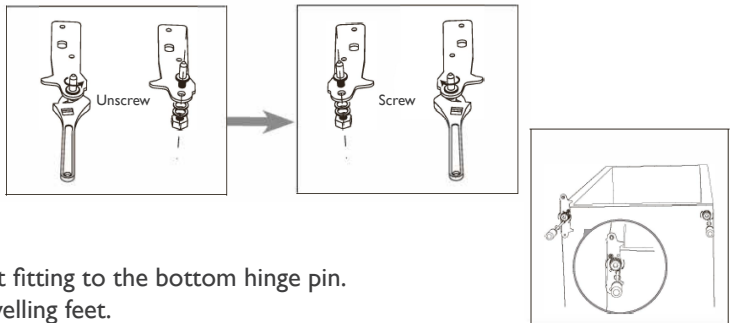
2. Remove the top cover and place it aside.

3. Unscrew the top hinge and then remove the door and place it on a soft pad to avoid scratching.



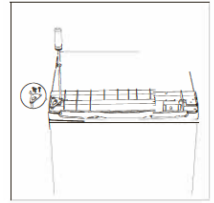
4. Unscrew bottom hinge. Then remove the levelling feet from both sides.

5. Unscrew and remove the bottom hinge pin, turn the bracket over and replace it.



6. Refit the bracket fitting to the bottom hinge pin. Replace both levelling feet.

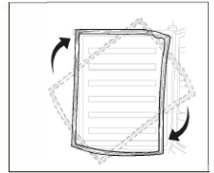
7. Place the door back on. Ensure the door is aligned horizontally and vertically, so that the seals are closed on all sides before finally tightening the top hinge.



8. Replace the top cover and fix it with the 2 screws on the back.



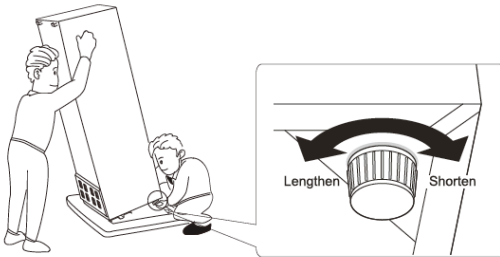
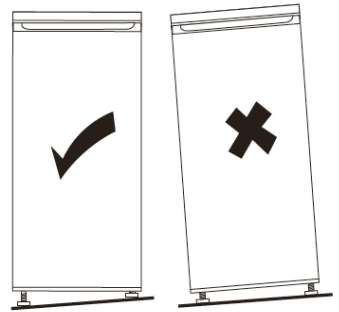
9. Detach the Fridge door gaskets (Seals), then rotate and re-attach. Please note this a recommendation and will ensure the door fits and seal correctly.



### Levelling the Unit

To do this adjust the two levelling feet at the front of the unit.

If the unit is not level, the doors and magnetic seal alignments will not be covered properly.



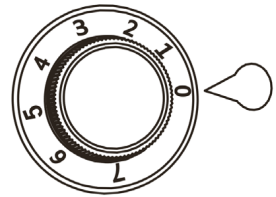
# OPERATING INSTRUCTIONS

**IMPORTANT:** Before using the appliance for the first time, wash the interior and all the internal accessories with lukewarm water and some neutral soap to remove the typical smell of a new product, then dry thoroughly.

**IMPORTANT:** Do not use detergents or abrasive powders, as these will damage the finish.

## Setting the Temperature

- The internal temperature is controlled by a temperature control dial, located inside the appliance.
- There are 8 settings. 1 is the warmest setting, 7 is the coldest setting and 0 is 'OFF'.
- The appliance may not operate at the correct temperature if it is in a particularly hot environment or if the door is open too often or for prolonged periods.
- This is a refrigerating appliance and is not suitable for freezing foodstuffs.



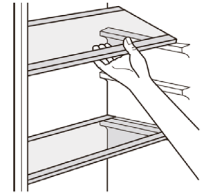
Temperature Setting Recommendation		
Environment Temperature	Freezer Compartment	Fridge Compartment
Summer	/	
		Set on 3-4
Normal	/	
		Set on 3-4
Winter	/	
		Set on 2-4

## Hints for Refrigeration

- Keep the food packed, wrapped, or covered. For hygiene reasons, always wrap food using a suitable packaging material before storing, to avoid contact with the surface of the appliance.
- Cooked food, cold dishes etc should be covered and placed on any shelf.
- Fruit and vegetables should be thoroughly cleaned and placed in the special drawer(s) provided.
- Milk bottles should have a cap and should be stored in the shelves in the door.
- Do not exceed the storage period indicated by the food manufacturer.
- To maintain adequate air circulation, do not over fill the appliance.
- Do not place food directly against the rear wall.
- Allow hot or warm foods to cool to room temperature before storing in the appliance.

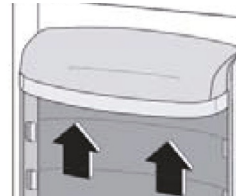
## Shelves

The walls of the refrigerator are equipped with a series of runners, so that the shelves can be moved and positioned as desired.



## Door Shelves

To allow for storage of food packages of various sizes, the door shelves can be placed at different heights. To make these adjustments, proceed as follows: gradually pull/push the shelf upwards until it comes free, then reposition as required. Once in position gently push downwards to secure.



## CLEANING AND MAINTENANCE

**IMPORTANT:** Switch off the electrical supply and remove the plug from the mains socket before carrying out cleaning or maintenance.

**WARNING:** Do not clean the appliance using a steam cleaner. Do not use abrasive cloths, powders, household cleaners, bleach, or wax polish to clean the appliance as these can leave a smell in the appliance and can damage the exterior. The appliance should be fully dry before it is switched back on.

### Interior

1. The interior of the refrigerator should be cleaned regularly to avoid odour.
2. Remove all food from the appliance and cover to help keep it cool.
3. Remove all the drawers and shelves carefully from the appliance and wash in warm clean water with a soft cloth and dry thoroughly. Never replace the drawers when still wet.
4. Use a soft cloth or sponge to clean the inside of the refrigerator, with two tablespoons of baking soda and a quart of warm water. Rinse with water and wipe clean.
5. Open the door and allow the interior to dry naturally before replacing shelves and the salad drawer.
6. Plug in, switch on and allow the temperature in the appliance to drop back to an adequate temperature.
7. Replace the food in the appliance.

### Exterior

Use a clean, soft cloth dampened in soapy water to wipe the exterior surface of the appliance and then dry thoroughly. Use a vacuum cleaner to remove dust from underneath the appliance and from around the compressor which is situated at the back of the appliance. Do this regularly to maintain adequate ventilation. Be careful not to damage the coolant system.

### Door Seal

Use a clean, damp soft cloth to wipe the door seal and in between the creases, take care to avoid damaging the door seal as this will affect the performance of your appliance.

### Drainage Channel

The drainage channel must be cleaned regularly to prevent a build-up of impurities; this can be found on the interior back wall of your appliance. Use a damp clean cloth to wipe the channel clean, then use a pipe cleaner or similar flexible object to clean the drainage hole to prevent blockages.

## **Going Away**

If you are going away and do not want to leave the appliance on, switch off at the mains socket and remove the plug ensuring not to pull the cord. Remove any food and follow the cleaning instructions in the “Cleaning and Maintenance” section.

**IMPORTANT:** Leave the door ajar as this will prevent odours and mold accumulating in the appliance and will allow the appliance to dry completely.

## **Power Cut**

In the event of a power cut keep the appliance door closed to maintain the temperature inside.

## TROUBLE SHOOTING GUIDE

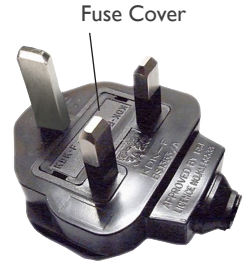
If you are having problems with your appliance, please use our trouble shooting guide below. If you are unable to resolve the issue using this guide please ring our Customer Service Department on 01473 271 272. Please have the model code and purchase information available.

<b>Problem</b>	<b>Possible Cause</b>	<b>Solution</b>
Appliance does not work	Temperature control dial is set to '0'	Set the dial to another setting to switch on the appliance
	Mains plug is not plugged in or is loose	Insert mains plug correctly
	Fuse has blown or is defective	Check fuse, replace if necessary
	Socket is defective	Mains malfunctions are to be corrected by an electrician
The food is too warm	Temperature is not properly adjusted	Refer to the "Setting the Temperature" section
	Door was open for an extended period	Open the door only as long as necessary
	A large quantity of warm food was placed in the appliance in the last 24 hours	Turn the temperature control dial to a colder setting temporarily
	The appliance is near a heat source	Please refer to the Installation section
Appliance cools too much	Temperature is set too cold	Turn the temperature control dial to a warmer setting temporarily
Unusual noises	Appliance is not level	Re-adjust the feet
	The appliance is touching the wall or other objects	Move the appliance slightly
	A component, e.g a pipe, on the rear of the appliance is touching another part of the appliance or the wall	If necessary, carefully bend the component out of the way
Water on the floor	Water drain hole is blocked	See the Cleaning and Maintenance section
Side panels are hot	Normal. Heat exchange parts are in the sides	Use gloves to touch sides

## MAINS PLUG FUSE REPLACEMENT

### Fuse Replacement (Class I)

This appliance must be earthed. Remove the fuse cover with a small flat head screw driver. Take out the fuse and replace with a new fuse of the same Amp. Replace the fuse cover and push back into place.



## DISPOSAL INFORMATION

The European Directive 2012/19/EU on Waste Electrical and Electronic Equipment (WEEE), requires that old household electrical appliances must not be disposed of in normal unsorted municipal waste.

Old appliances must be collected separately in order to optimise the recovery and recycling of the materials they contain and reduce the impact on human health and the environment.

The crossed out “wheeled bin” symbol on the product reminds you of your obligation, that when you dispose of the appliance it must be separately collected. Consumers should contact their local authority or retailer for information concerning the correct disposal of their old appliance.





## Igenix Warranty Terms & Conditions

This product is guaranteed for a period of 12 months as standard from the date of purchase against mechanical and electrical defects. You can extend your warranty for a further 12 months by registering your product.

Upon registration we will cover your product for a period of 24 months from the original purchase date against any mechanical or electrical defects.

To qualify for the warranty, the product must be used for domestic household use only and in accordance with the instructions in the user manual. Any misuse of the product will result in the warranty being void.

The warranty does not cover accidental damage, misuse, neglect, tampering or incorrect adjustment or installation.

The warranty will be rendered invalid if the product is resold, has had its serial number removed (or has an invalid serial number), or if an unauthorised person has carried out any repairs or alterations.

The warranty does not cover accessories or consumable parts that require replacement under normal use. This includes shelving, dials, filters, belts and trays etc.

In the unlikely event of a breakdown please refer to the Troubleshooting guide in your user manual and check all plugs, fuses and the electricity supply.

If you still require assistance please contact our Customer Service department on **01473 271 272** or write to us at the following address:

**Customer Service Department  
38 Bluestem Road, Ransomes Europark  
Ipswich, IP3 9RR**

Please quote the Product Code which begins 'IG' or 'DF' and the PO Number on the Rating Label, and give details of the exact fault. We will then decide whether to repair or replace the item.

Before we arrange the repair or replacement you will be required to return a copy of your proof of purchase. Please retain your original.

If an item is replaced within the agreed warranty period, the warranty for the replacement item will be calculated from the purchase date of the original.

In the event that the product is inspected and no fault is found or the product is not within the warranty period you will be charged for the repair and any carriage costs.



## **Thank you for choosing Igenix**

As a valued customer we would like to offer you a FREE 2 year warranty to cover your product against any electrical or mechanical defects.

This means that in the unlikely event you develop a fault or problem with your product we will happily repair or replace the item free of charge.

To qualify for the 2 year warranty you must register your product within 30 days of purchase. The full Terms & Conditions of our warranty policy are shown on the opposite page. They are also available on our website. **[www.igenix.co.uk](http://www.igenix.co.uk)**

# igenix

38 Bluestem Road, Ransomes Europark, Ipswich, IP3 9RR  
Castle Electrical Factors Ltd., Dundalk, A91 KA9R, IR  
Tel. 01473 271 272

Disclaimer: Igenix operate a policy of continual improvement and development.  
We therefore reserve the right to change/alter the specification and appearance of our appliances without prior notice.  
All diagrams and images shown in this manual are for illustration purposes only.